



Partnership for Reviving Routine Immunisation in Northern Nigeria; Maternal Newborn and Child Health Initiative

PROGRESS: PRIMARY HEALTH CARE UNDER ONE ROOF

National policy to integrate management of Nigeria's Primary Health Care

Reflections from our experience in Jigawa state, Northern Nigeria. Fragmentation has been identified as the most significant problem facing Primary Health Care (PHC) services, and significantly affects utilisation rates and health indices. Bringing Primary Health Care Under One Roof (PHCUOR) is a policy to reduce this fragmentation and involves the integration of all PHC services under one authority.

Key Elements of PHCUOR Policy

PRINCIPLE OF 'THREE ONES' (ONE MANAGEMENT BODY, ONE PLAN AND ONE MONITORING AND EVALUATION SYSTEM).

SINGLE MANAGEMENT BODY WITH CONTROL OVER SERVICES AND RESOURCES (HUMAN AND FINANCIAL)

ENABLING LEGISLATIVE FRAMEWORK

DECENTRALIZED AUTHORITY, RESPONSIBILITY AND ACCOUNTABILITY WITH APPROPRIATE SPAN OF CONTROL.

INTEGRATED SUPPORTIVE SUPERVISORY SYSTEM MANAGED FROM A SINGLE SOURCE.

INTEGRATION OF ALL PHC SERVICES UNDER ONE AUTHORITY.

EFFECTIVE REFERRAL SYSTEM BETWEEN/ACROSS THE DIFFERENT LEVELS OF CARE.

Outcomes

CREATION OF GUNDUMA (DISTRICT) HEALTH SYSTEM

INCREASED EFFICIENCY AND COORDINATION OF HEALTH SERVICES (REDUCTION IN DUPLICATION)

DECENTRALISATION OF HEALTH SERVICES (DEVOLUTION AND DE-CONCENTRATION)

DYNAMIC SHIFT IN THE BALANCE OF POWER OVER MANAGEMENT OF KEY RESOURCES (FINANCIAL AND HUMAN) FROM POLITICIANS TO MANAGERS.

INCREASED CONFIDENCE IN AND UTILISATION OF SERVICES

Learning

POLITICAL WILL AND COMMITMENT IS ESSENTIAL

CONSIDERABLE TIME IS NEEDED - FRAGMENTATION IS QUICK, INTEGRATION IS LENGTHY

WORKING AT THE GOVERNANCE/SYSTEMS INTERFACE IS KEY

Author: Emmanuel Sokpo and Andrew McKenzie; emmanuel.sokpo@gmail.com or jocadamckenzie@gmail.com for the PRRINN-MNCH programme

PRRINN-MNCH, 2 Mallam Bakatsine Street, Off Dawaki Road, Nassarawa GRA, Kano, Nigeria

Visit PRRINN-MNCH's website: www.prrinn-mnch.org
Telephone: +234 (0) 64 890366 | Email: info@prrinn-mnch.org

2003

INSTITUTIONAL ASSESSMENT

2004-2007

PLANNING

LEGISLATIVE FRAMEWORK DEVELOPED

2007

GUNDUMA ACT PASSED BY JIGAWASTATE ASSEMBLY & SIGNED BY STATE GOVERNOR

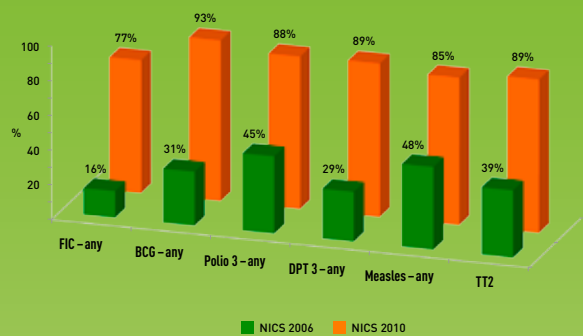
2007-2012

2011 PHCUOR BECAME NATIONAL POLICY

The process involved the creation of a Gunduma (district) health system, amalgamating responsibility for services and resources of several local government authorities under nine Gunduma Councils which are accountable to a single Gunduma Board.

A significant increase in immunization coverage

Comparison of Nigerian Immunization Coverage Survey 2006 and 2010 data, Jigawa state



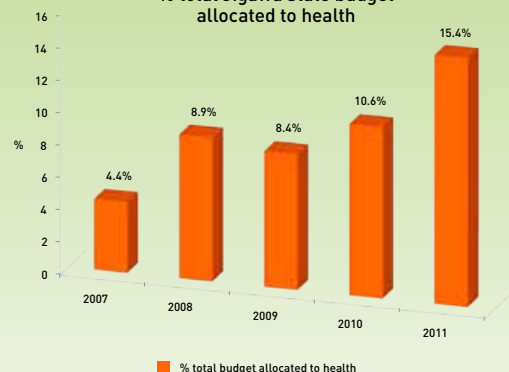
A significant increase in attended deliveries

Household Survey comparison, 2009-2011: Jigawa state



Progressive rise in budget allocation to health services (Budget performance is over 90%)

% total Jigawa state budget allocated to health



The PRRINN-MNCH programme is funded and supported by UK aid from the UK Government and the State Department of the Norwegian Government. The programme is managed by a consortium of Health Partners International, Save the Children and GRID Consulting, Nigeria.

