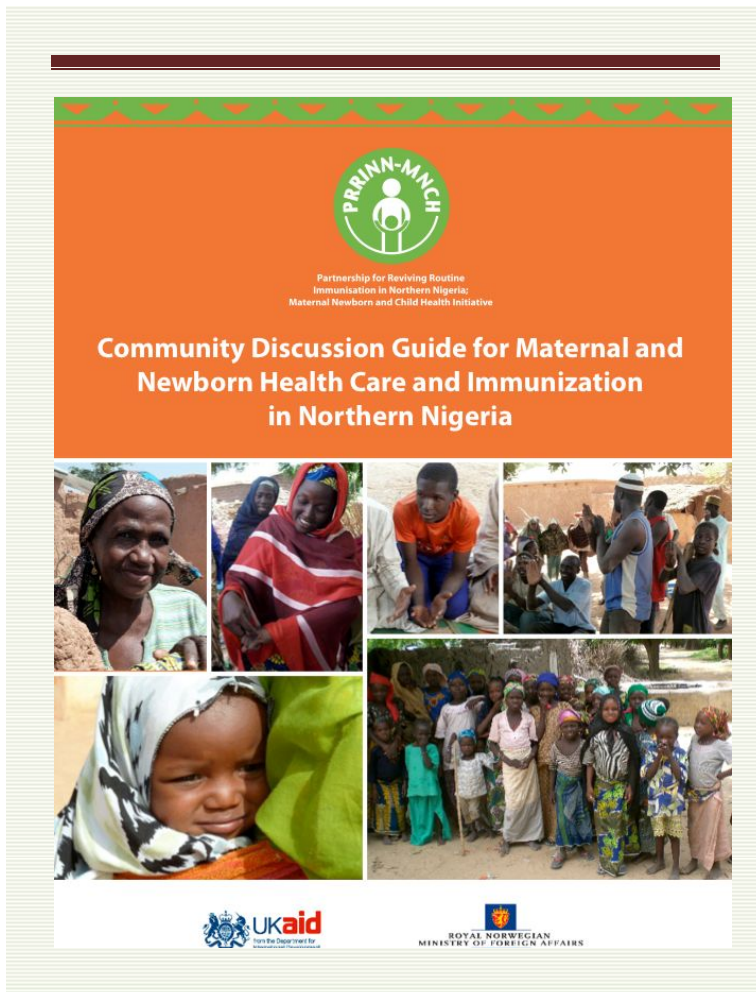


## Community Discussion Guide

The *Community Discussion Guide for Maternal and Newborn Health Care and Immunization in Northern Nigeria* sets out a process for engaging with communities to increase awareness of and social approval to act on maternal, newborn and child health issues, including routine immunization. The Discussion Guide covers a wide range of health and related topics. It provides the starting point for the community mobilisation efforts supported by PRRINN-MNCH and its stakeholders. The Guide has been endorsed by the four PRRINN-MNCH states.



### Content of Community Discussion Guide on Maternal, Newborn and Child Health, Including Immunization

#### Health topics

- Emergency maternal health care
- Care during pregnancy, including antenatal care
- Delivering with a skilled birth attendant
- Post-natal care
- Essential newborn health care
- Newborn emergencies

#### Other issues

- Reaching the vulnerable and socially excluded
- Importance of male involvement
- Establishing community systems to increase access to MNCH services
- Community structures and services that promote maternal, newborn and child health